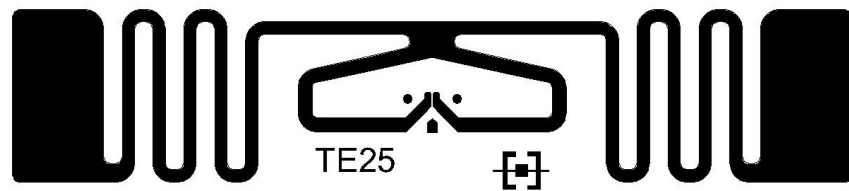
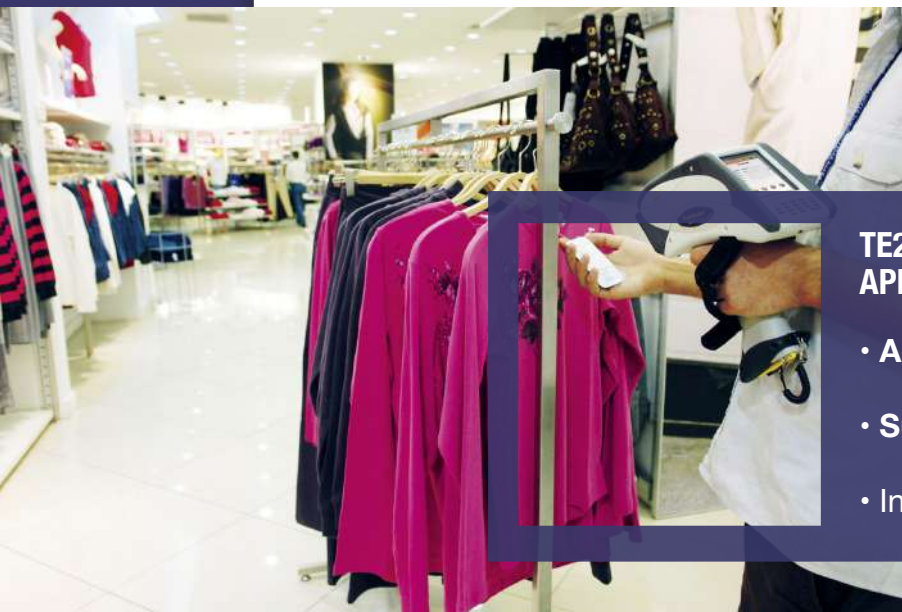


# TE25 Apparel



<b>PROTOCOL:</b>	EPC Class 1 Gen 2 / ISO 18000-6C
<b>OPERATING FREQUENCY:</b>	Global 860-960 Mhz
<b>ANTENNA SIZE:</b>	68 x 14 mm
<b>INTEGRATED CIRCUIT:</b>	Impinj Monza 5
<b>EPC MEMORY:</b>	128 bits
<b>USER MEMORY:</b>	na

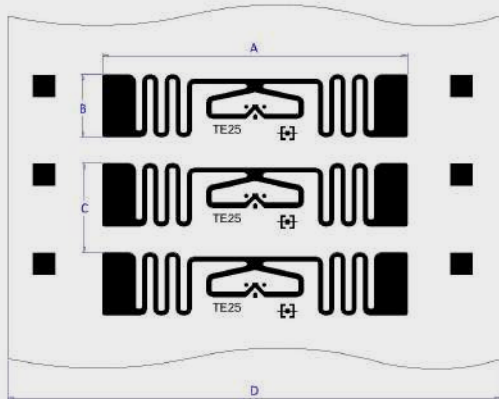


## TE25 APPAREL COMMON APPLICATIONS

- Apparel
- Supply chain
- Industrial

## INLAY GENERAL DIMENSIONS

### DRY INLAY

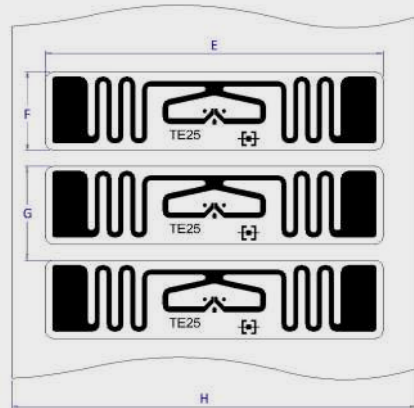


A- Inlay Width	68 mm
B- Inlay Length	14 mm
C- Inlay Pitch	19,8 mm
D- Web Width	110 mm



DRY INLAY = 50 µm PET + 150 µm die

### WET/WHITE-WET INLAY



E- Label Width	71 mm
F- Label Length	16,5 mm
G- Label Pitch	19,8 mm
H- Web Width	85 mm



## GENERAL CHARACTERISTICS OF INLAY

Operating Temperature Range	-40° C to +85° C at 40-80% RH
Storage Temperature	-40° C to +85° C at 40-80% RH
Electrostatic Discharge (ESD) tolerance	2.000V HBM (Human Body Model)

## REEL DETAILS

Inner core diameter	76 mm
Outer core diameter	190 mm
Bending Diameter	≥ 50mm, tension less than 10 N
Average # of units per roll	6.000 pieces
Quality	100% performance tested
Available formats	Dry, wet, tag

**CARE AND HANDLING:** RFID inlays are sensitive to ESD. Observe standard practices to keep environmental static charge to a minimum.  
**APPLICATIONS:** This product should be tested by the customer/user thoroughly under end use conditions to ensure the product meets the particular requirements.

**PRODUCT CHANGES:** Trace-Tech Id Solutions reserves the right to modify, change, supplement or discontinue product offerings at any time without notice.